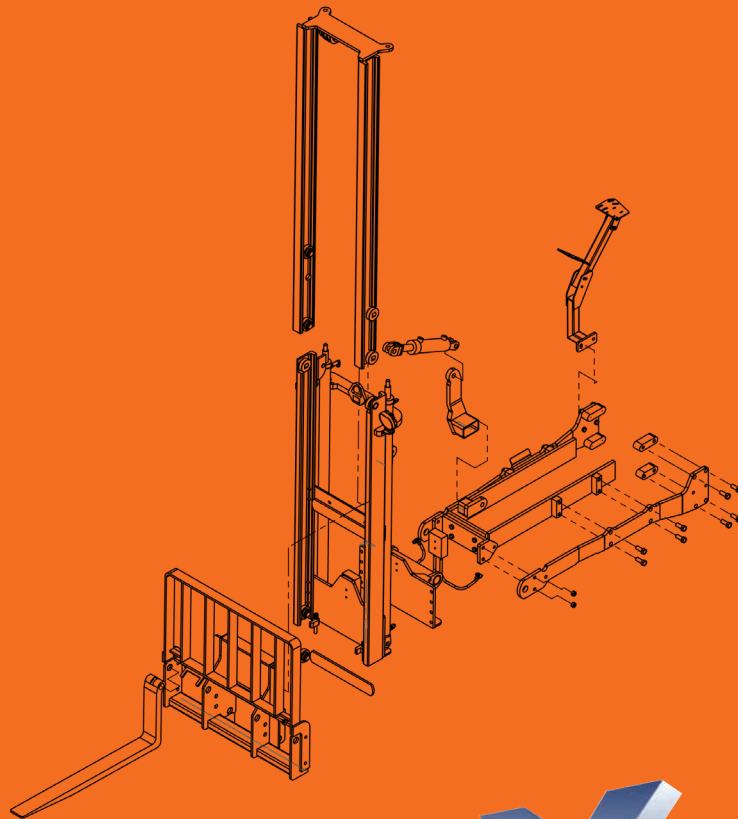


# ***KBF forkmasts***



Quality in Design, Engineering & Workmanship



**BEN WYE**  
engineering & design

# ABOUT BEN WYE



Ben Wye Engineering & Design Pty Ltd is a 100% Australian owned and operated company based in Uraidla in the agricultural region of the Adelaide hills.

Founded in 1990 Ben Wye Engineering is setting the benchmark for quality in design, engineering and workmanship.

From humble beginnings of manufacturing machinery and general fabrication for the local growers, Ben Wye Engineering now has a dealer network Australia-wide.

We specialise in tractor mounted forkmasts, tractor drawn cutting equipment, fruit bin trailers and custom made orchard & vineyard equipment.

Our range of machinery has stood the test of time and is used in the agricultural industry by contractors, Parks & Gardens and lifestyle farmers.

Realising that there are different applications in different regions throughout Australia, we can custom build a Bin Loader to suit any needs.

We also manufacture other products including tractor mounted forklifts, three point linkage forklifts and many other agricultural implements.



We use the latest 3D design software with Solidworks Professional, coupled with state of the art processing machines, ART XRP4000 CNC Plasma cutter for impeccable steel cutting and

DMG-CTX510 CNC Lathe for precise machined parts. We employ the finest tradesman and only use high grade products to produce Australian made products that we are proud of.

## KBF FEATURES

Ben Wye Engineering & Design Pty Ltd has 3 models of forklift available:

- 1800 (6ft) lift
- 2400 (8ft) lift
- 3000 (10ft) lift

Additional models can be designed on request which are designed using the latest 3D design software.

Two stage Clearview mast design with 2 hydraulic lift cylinders tucked in behind the mast profile to give the operator great vision through the fork mast.

Industrial mast section with over a 20mm flange thickness and hot rolled to a tolerance of half a millimetre make the mast incredibly strong and accurate. The combination bearing is the precision

that allows the unit to take up to 1500kg with superior accuracy.

The fork tines with 3 standard models in our range. The 100 x 40mm tine which are eye mounted on a 38.1mm 1045 grade chrome bar for strength and movability.

There are also many optional accessories including:

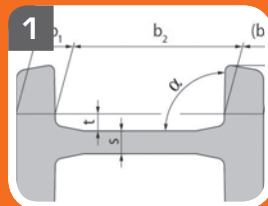
- Hydraulic side shift
- Auxiliary hydraulics for bin tippers
- High back frame – plus many more.

We also have a range of:

- Pallet forks to suit tractor three point linkages
- Skid steer applications
- Loaders and telehandlers

They are all heavy duty construction and are rated up to 1500kg





Hot rolled Forkmast profile is rolled to a tolerance of .5mm, for precision and strength



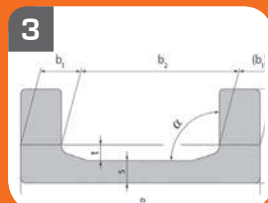
Custom tractor sub frames to suit most modern day tractors



Two stage mast with the hydraulic lift cylinders tucked behind the channel to give a clear view mast for greater operator view



Mast carriage is designed lower to give better fork tip viewing



Hot rolled Forkmast profile is rolled to a tolerance of .5mm, for precision and strength. It is perfectly formed to take the combination bearing



Fork tine retainers for quick and easy adjustment



Two hydraulic tilt rams for superior strength and balance



Industrial lifting leaf chain for double the lifting capacity of roller chain



Custom machined hydraulic manifold incorporating a safety relief valve and check valve



Combination Bearings can take high radial and axial loads and provide even forces in the profiles. With roller bearings acting in both directions mast wear and sway are near eliminated



Auxiliary functions can be conveniently located on the fork carriage for secondary hydraulic functions



Made in Australia by  
an Australian Company

### STANDARD FEATURES

Three standard two stage masts rated at 1500kg:

- 1800 (6ft) lift
- 2400 (8ft) lift
- 3000 (10ft) lift

Main mast:

- Clearview design for excellent visibility
- Precision hot rolled I&C profile channel produced in Germany providing superior strength coupled with extreme precision
- Combination bearings can take high radial and axial loads and provide even forces in the profiles, with roller bearings acting in both directions. Mast wear and sway are nearly eliminated.
- Industrial lifting leaf chain for double the lifting capacity of roller chain
- Lifting eye for easy removal

Choice of controls:

- In-cab joystick
- Third function electric controls
- In-cab levers
- Tractor remotes
- Spool bank mounted on ROPS tractors

Fork tines:

- Industrial pin eye fork tines for better flexibility on uneven ground
- Fold back for transport
- Forks are mounted on 38.1mm 1045 chrome plated rod for easy adjustment
- Standard fork tine retainer for quick adjustment
- Each fork tine is rated at 1800kg each
- Fork tines have a thickened heel to give maximum life

Mast carriage:

- Designed deliberately strong and stout to give the operator a better view of the fork tip
- Fork tines drop under the carriage to give better clearance and eliminate wear

Hydraulics:

- 2 x 2 inch cylinders with 2 x 2½ inch tilt cylinders both have a hardened chrome piston rod, honed seamless steel tube with halite industrial seals
- Purpose built hydraulic manifold with built-in safety relief
- 2, 3 or 4 spool bank available
- All Australian made child fittings used exclusively
- Quick release couplers for easy disconnection

### OPTIONAL EXTRAS

Side shift

Spool bank levers

Mechanical spool joystick

Cable control levers

Cable control joystick

3rd function electric

Load sense spool valves

Auxiliary couplers on carriage

Camera view

Bolt-on high back frames

Long drop fork tines

Mast mounted LED spotlights

Hoses for tractor remotes

Three point linkage rear mount

Ballast TPL weight boxes





# BEN WYE – KBF FORKMASTS TECHNICAL SPECIFICATIONS

30th JUNE 2018

MODEL	1800	2400	3000
Lift height	1830mm	2400mm	3050mm
Mast height	1665mm**	1970mm**	2275mm**
Weight	390kg	440kg	480kg
Lift capacity* @ 500mm centres	1500kg*	1500kg*	1500kg*
Hydraulics required	18-60ltr/min	18-60ltr/min	18-60ltr/min
<b>Fork tine</b>			
(L x W x thickness)	1070x100x40mm	1070x100x40mm	1070x100x40mm
Fork tine rating	1800kg	1800kg	1800kg
<b>Tilt range</b>			
(Forward/Back)	11/11	11/11	11/11
Ground clearance	475mm**	475mm**	475mm**

\* Tractor dependent \*\* Wheel dependent

## OPTIONS

MODEL	1800	2400	3000
2 Bank Spool Valve (open centre)	Standard	Standard	Standard
3 Bank Spool Valve	Optional	Optional	Optional
4 Bank Spool Valve	Optional	Optional	Optional
Closed Centre Spool	Optional	Optional	Optional
<b>ROPS</b>			
Direct Spool Control	Standard	Standard	Standard
Mechanical Joystick	Optional	Optional	Optional
Joystick incl. Cables	Standard	Standard	Standard
Joystick with 1 electric function	Optional	Optional	Optional
Joystick with 2 electric functions	Optional	Optional	Optional
<b>Cab Tractor</b>			
Joystick incl. cables	Standard	Standard	Standard
Joystick with 1 or 2 electric function	Optional	Optional	Optional
2, 3 or 4 Lever Controls incl. Cables	Optional	Optional	Optional
<b>Other Options</b>			
Tractor Subframe	Optional	Optional	Optional
Side Shift	Optional	Optional	Optional
1 or 2 Auxiliary Function	Optional	Optional	Optional
High back Frame (bolt on)	Optional	Optional	Optional
Long Drop Fork Tines	Optional	Optional	Optional
Priority Valve for Flow above 60ltr	Optional	Optional	Optional
TPL Tractor Mount (incl. tilt ram)	Optional	Optional	Optional

## 2 YEAR WARRANTY

Ben Wye Engineering & Design Pty Ltd warrants to the original purchaser that defects in materials or workmanship for a period of two years or 600 hours of use whichever occurs first. Warranty is limited to the replacement of any defective part by Ben Wye Engineering & Design and/or the installation by an authorised dealer. This warranty does not cover common wear items such as chain, rollers, bearings hoses or fork tines etc. Any part or product which in Ben Wye Engineering & Design's judgement has been: Misused or damaged by accident or by lack of normal maintenance or care. Repaired or modified in a way that adversely affects the mast or Subframe. Used for a purpose for which the product is not designed will not be covered by this warranty Ben Wye Engineering will repair or replace, without charge for parts or labour, any defects and under normal service conditions. Failure to properly maintain chain lubrication, grease points, and hydraulic systems is classed as misuse. The warranty does not cover: Loss of productivity, Crop loss, Inconvenience, Down time or other consequential damages. Delivery of the product or part is at the owner's cost to the original place of purchase. Any penalty rates or travel time shall be at the owner's expense. This warranty is not valid unless the product is registered with Ben Wye Engineering & Design Pty Ltd within 14 days from date of delivery to the end user. All warranty claims must be reported to Ben Wye Engineering & Design Pty Ltd, through the original dealer and all warranty approvals must come from Ben Wye Engineering & Design Pty. Ltd. before warranty work can commence.

## IMPORTANT NOTICE – PLEASE READ

You MUST check all information with your Ben Wye Dealer prior to placing your order. Ben Wye Engineering & Design Pty Ltd. has used every reasonable endeavor to ensure that the information in this brochure is correct at the time of publication. However, because the availability of materials, equipment and colours may vary from time to time you should not rely on this brochure but should contact your authorised Dealer to confirm that the information in this brochure is up to date. When ordering a machine, you should check with your Ben Wye Dealer to ensure that your chosen machine specifications, equipment and colour is available and that the desired machine can be delivered in a time frame which is suitable to you. Ben Wye Engineering & Design Pty Ltd. may alter any details contained in this brochure at any time, and to the extent allowed by law, Ben Wye Engineering & Design Pty Ltd will not be liable for any reliance you place upon this brochure. Colours shown in this brochure may vary from actual colours due to the printing process. Distributed nationally by BEN WYE ENGINEERING & DESIGN PTY LTD Limited ACN 088 257 327, ABN 72 088 257 327, 1170 Greenhill Road, Uraidla. S.A. 5142. Part Number BWKBFCAT001 Printed 09/16



# Pallet Forks

We also have a range of pallet forks to suit tractor three point linkages, skid steer applications, loaders and telehandlers all of heavy duty construction and rated up to 1500kg



# BEN WYE

engineering & design

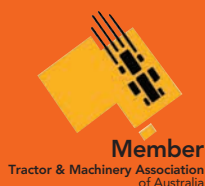
BEN WYE ENGINEERING & DESIGN PTY LTD

1170 Greenhill Road, Uraidla SA 5142

Ph: (08) 8390 3664 Fax: (08) 8390 3971

[sales@benwye.com.au](mailto:sales@benwye.com.au)

[www.benwye.com.au](http://www.benwye.com.au)



AVAILABLE FROM